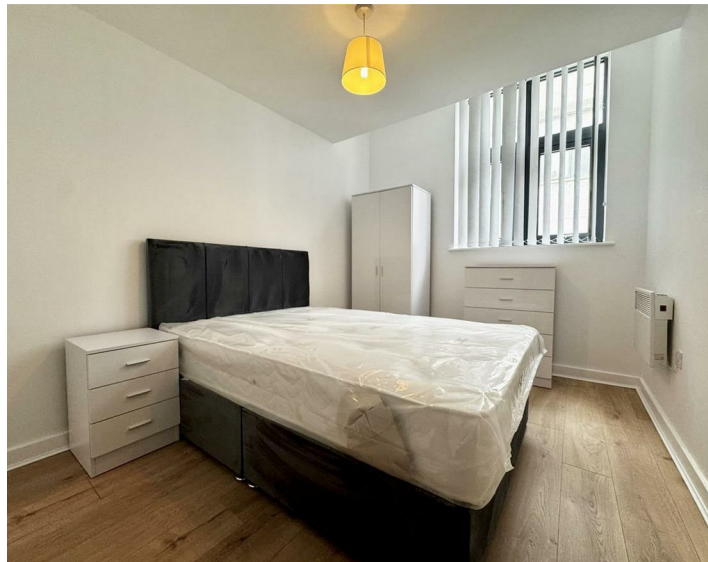




Apt 39 4 Leigh Street, Liverpool, L1 1NT
£775 PCM

www.
cityresidential
.co.uk



About the Property

Move In Ready!

City Residential is delighted to present this well-appointed one-bedroom apartment, located in the popular Leigh Street development in the heart of Liverpool.

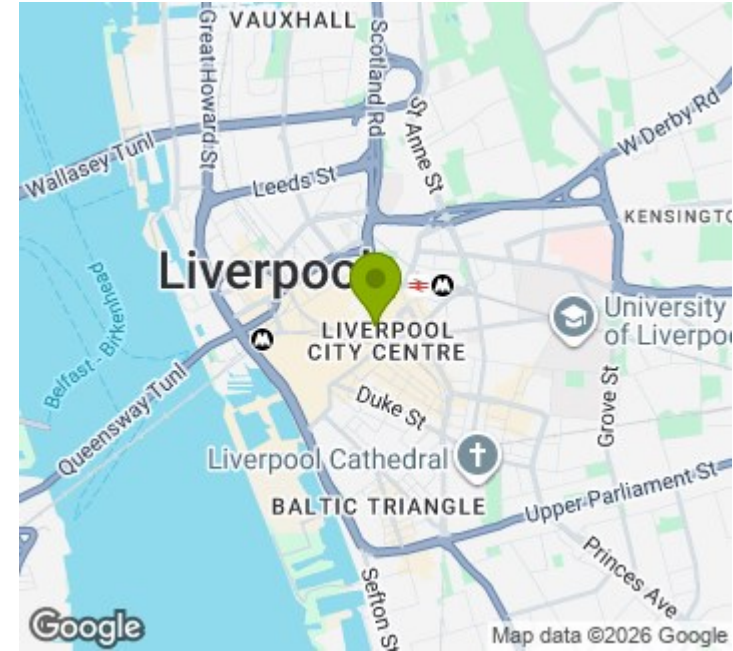
Situated just off Church Street, one of the city's main shopping destinations, the property offers easy access to a fantastic selection of bars, restaurants, and high-street retailers, making it perfect for those who want to enjoy everything Liverpool has to offer right on their doorstep.

Tastefully presented throughout, the accommodation briefly comprises an open plan living and dining area, a fully fitted kitchen, a separate bathroom and bedroom.

Early viewing is highly recommended to fully appreciate the quality and convenience of this apartment.

Contact City Residential today on 0151 231 6100 to arrange your viewing!

- EPC - C
- Council Tax Band - A
- Deposit Amount - £894.00
- No Parking
- Available Now!
- Studio Apartment
- Call 0151 231 6100 to arrange a viewing
- Head lease Restriction - No Pets



Energy Efficiency Rating

	Current	Potential
Very energy efficient - lower running costs		
(92 plus) A		
(81-91) B		
(69-80) C	73	73
(55-68) D		
(39-54) E		
(21-38) F		
(1-20) G		
Not energy efficient - higher running costs		
England & Wales	EU Directive 2002/91/EC	

City Residential
 81/87 Victoria Street, The Old Haymarket, Liverpool L1 6DG
 T: 0151 231 6100 F: 0151 231 6105
 E: sales@cityresidential.co.uk



WWW.
cityresidential
 .co.uk